

BRIDGESTONE

VSDL

V-STEEL
D-LUG

L-5, INDUSTRIAL SERVICE IND-5



Tire Image shown is 15.5R25 ~60/80R57

The V-Steel D-Lug premium radial tire provides excellent traction, stability and features tread compounds for severe loader applications. For use in underground mines, open pits and quarries .

The VSDL 35/65R33 2* is used for Industrial Service application.

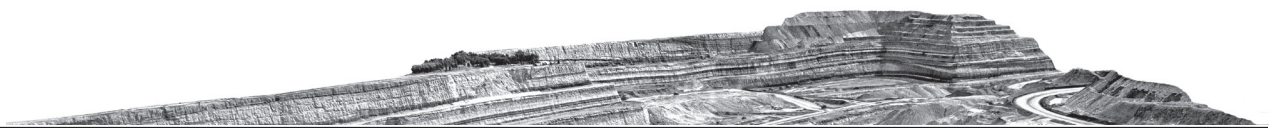
LOADERS

LHD

CONTAINER HANDLERS

SPECIALIZED FEATURES

- 1 EXTRA DEEP TREAD - ROCK PATTERN**
Provides excellent traction on severe or rocky conditions, as well as stability, and ride comfort
- 2 SPECIAL SIDE WALL DESIGN AND HEAVY-DUTY CASING**
Provides extended protection from cutting and other damage
- 3 DESIGNED FOR EXTRA-HEAVY-DUTY LOADER PERFORMANCE**



BRIDGESTONE COMMERCIAL

See your Bridgestone representative for more information.

BS125 - V24 ©Bridgestone Americas Tire Operations LLC. All Rights Reserved.

BRIDGESTONE

Firestone

CATEGORY	SIZE	PLY/STAR RATING	COMPOUND/ CONSTRUCTION	TRA	ARTICLE #	AVG. WT. [□] [LBS / KG]	OTD [□] [32" / MM]	OVERALL DIAMETER [□] [IN / MM]	OVERALL WIDTH [□] [IN / MM]
SMALL TUBE TYPE	8.25R15	2*	D2A	L-5	424544	158	60	34.6	9.8
	10.00R15	2*	D2A	L-5	157384	182	60	35.6	11.3
	12.00R20	2*	D2A	L-5	157392	325	72	46.0	12.6
SMALL TUBELESS	14.5R15	2*	D2A	L-5	152455	212	60	35.4	14.1
	17.5R25	1*	D2A	L-5	423165	585	86	55.1	17.3
	New 17.5R25	2*	D2A	L-5	19116	606	86	55.1	17.3
	20.5R25	1*	D2A	L-5	421855	881	99	61.1	20.9
	23.5R25	1*	D2A	L-5	420565	1,175	110	65.8	24.1
	23.5R25	2*	D2A	L-5	422428	1,162	110	65.8	24.1
	26.5R25	1*	D2A	L-5	420573	1,582	120	70.5	26.9
	26.5R25	2*	D2A	L-5	421332	1,594	120	70.5	26.9
	29.5R25	1*	D2A	L-5	420581	2,007	131	75.8	30.2
	29.5R25	2*	D2A	L-5	423432	2,045	131	75.8	30.2
LARGE TUBELESS	29.5R29	2*	D2A	L-5	421758	2,159	132	79.1	30.6
	33/65R29	2*	D2A	L-5	011334	2,145	114	75.9	33.2
	35/65R33	2*	D2A	L-5	425010	2,720	120	81.7	34.6
	35/65R33	2*	IDU	Industrial Service	429872	2,720	120	81.7	34.6
	45/65R39	1*	D2A	L-5	423378	4,848	146	101.6	42.3
	45/65R39	1*	D2A L5	L-5	423386	4,842	146	101.6	42.3
GIANT TUBELESS	45/65R45	2*	D2A	L-5	426047	5,492	141	107.5	44.2
	45/65R45	2*	D2A LC	L-5	422843	5,484	141	107.5	44.2
	45/65R45	3*	D2A LC	L-5	011370	5,492	141	107.5	44.2
	50/65R51	2*	D2A	L-5	428053	7,992	161	120.9	50.3
	55.5/80R57	2*	D2A	L-5	422568	13,544	158	147.2	54.9
	60/80R57	2*	D2A	L-5	430229	15,200	149	155.6	58.7

[□] Actual specifications may vary depending on the tire produced. Off-road tire limited warranty information is available from your Bridgestone representative or dealer.

BRIDGESTONE COMMERCIAL

See your Bridgestone representative for more information.

BS125 - V24 ©Bridgestone Americas Tire Operations LLC. All Rights Reserved.
 "Best-In-Class Service" is based on the largest number of dealers in the commercial tire dealer network in U.S. found on www.commercial.bridgestone.com. As compared to the 2022 U.S. Replacement and Retreaded Medium/Heavy Truck Tire Brands with similar market share as listed in the January 2023 Modern Tire Dealer (page 34).

